

BECAUSE ALL RIFLES ARE NOT CREATED EQUAL!

Federal® introduces ... **TRU® Tactical Rifle Urban Ammunition**

Custom-made ammunition for your urban rifle.



Today's Law Enforcement Officers need an ammunition that is specifically designed for use in semi-automatic and automatic rifles, "Urban Rifles." Most of these rifles are variants of the M-16 or AR-15. We've designed TRU with these rifles in mind. Federal TRU ammunition is engineered using MIL-QUALITY specifications. Each Federal TRU cartridge is made using select mil-quality low flash powders that do not disrupt an officer's night vision. The TRU case and web are built using thicker brass, adding the extra strength needed for the high powered rifle. TRU primers are crimped for

added holding ability. This virtually eliminates backed out primers that can lock-up your weapon. With TRU ammunition, potentially disastrous situations are greatly reduced. TRU bullets are specifically engineered ranging from fragmenting designs for tactical entry to deeper penetrating bullets for patrol. This is particularly important in today's urban settings.

For more information on TRU and other Federal products, please visit our web-site.

TACTICAL® BONDED Ammunition

Tough! TACTICAL BONDED high-performance duty ammunition has no equal. Test after test, TACTICAL out performs conventional bullets, even through the toughest of barriers. TACTICAL's bonded core produces large uniform expansion, with penetration performance to match. When conditions range from clear shots to glass barriers, urban to rural, TACTICAL is the PROVEN CHOICE for Law Enforcement Professionals.



TACTICAL BONDED unequaled performance through glass barriers.

FEDERAL®

www.le.atk.com

Federal Cartridge Company
900 Ehlen Drive
Anoka, MN 55303

To learn about the location of our next Wound Ballistic Workshop please contact:

PHONE: 800-256-8685

FEDERAL[®]



LAW ENFORCEMENT |

.223 RIFLE DATA BOOK

223 REM 5.56 NATO

Bare Gel**FEDERAL**

Firearm: Colt M4

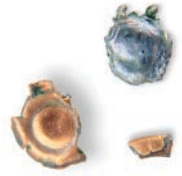
Barrel: 14.5"

Twist Rate 1x7"

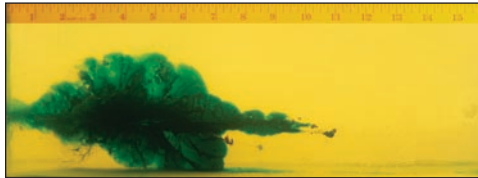
Range: 10 Yards

Caliber**Wound Characteristics****Stats****Recovered Bullet****T223D****TRU 223 - 40 Gr. HP**

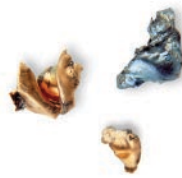
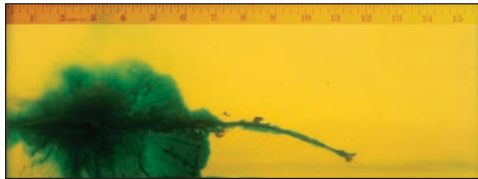
Bullet Weight: 40 Gr.
Velocity: 3270 FPS
Penetration: 5.75"
Expansion: .355"
Retained Wt: 9.4
Percent Wt. Retained: 23.50%

**T223A****TRU 223 - 55 Gr. SP**

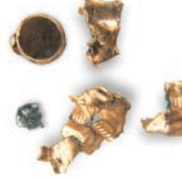
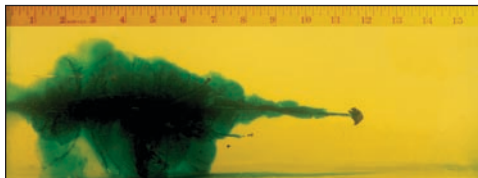
Bullet Weight: 55 Gr.
Velocity: 2774 FPS
Penetration: 7.75"
Expansion: .523"
Retained Wt: 50.6
Percent Wt. Retained: 92.00%

**T223E****TRU 223 - 55 Gr. BTHP**

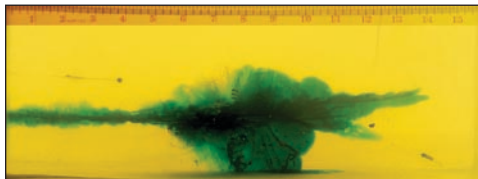
Bullet Weight: 55 Gr.
Velocity: 2815 FPS
Penetration: 11.25"
Expansion: .3955"
Retained Wt: 16.8
Percent Wt. Retained: 30.55%

**T223F****TRU 223 - 55 Gr. Ballistic Tip**

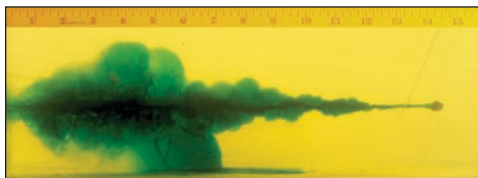
Bullet Weight: 55 Gr.
Velocity: 2845 FPS
Penetration: 11.50"
Expansion: .227"
Retained Wt: 10.0
Percent Wt. Retained: 18.18%

**T223L****TRU 223 - 64 Gr. SP**

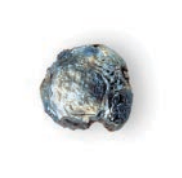
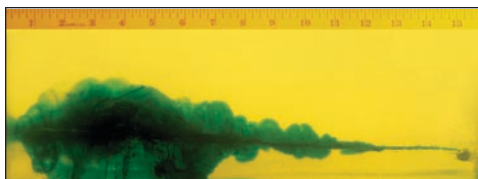
Bullet Weight: 64 Gr.
Velocity: 2646 FPS
Penetration: 12.00"
Expansion: .4935"
Retained Wt: 44.1
Percent Wt. Retained: 68.91%

**AE223****American Eagle 223 - 55 Gr. FMJ**

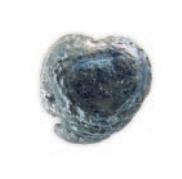
Bullet Weight: 55 Gr.
Velocity: 2869 FPS
Penetration: 14.50"
Expansion: .211"
Retained Wt: 19.8
Percent Wt. Retained: 36.00%

**LE223T1****TACTICAL 223 - 55 Gr. BSP**

Bullet Weight: 55 Gr.
Velocity: 2705 FPS
Penetration: 14.75"
Expansion: .469"
Retained Wt: 55.0
Percent Wt. Retained: 100.00%

**LE223T3****TACTICAL 223 - 62 Gr. BSP**

Bullet Weight: 62 Gr.
Velocity: 2716 FPS
Penetration: 16.00"
Expansion: .4955"
Retained Wt: 60.9
Percent Wt. Retained: 98.23%



Expansion, Retained Weight and Percentage Retained Weight are based on the largest available bullet fragment.

223 REM 5.56 NATO
Heavy Clothing

FEDERAL

Firearm: Colt M4

Barrel: 14.5"

Twist Rate 1x7"

Range: 10 Yards

Caliber

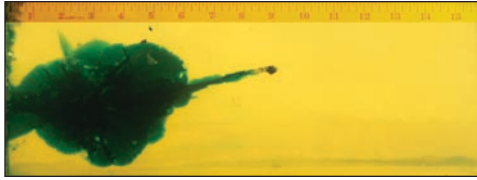
Wound Characteristics

Stats

Recovered Bullet

T223D

TRU 223 - 40 Gr. HP

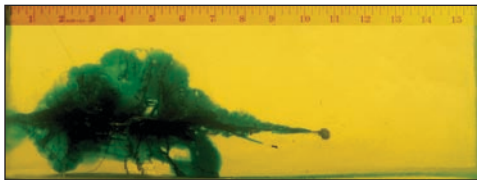


Bullet Weight: 40 Gr.
 Velocity: 3270 FPS
 Penetration: 9.00"
 Expansion: .32"
 Retained Wt: 12.7
 Percent Wt. Retained: 31.75 %



T223E

TRU 223 - 55 Gr. BTHP

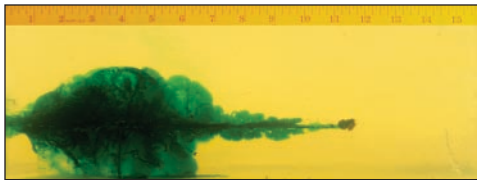


Bullet Weight: 55 Gr.
 Velocity: 2815 FPS
 Penetration: 11.00"
 Expansion: .3865"
 Retained Wt: 23.6
 Percent Wt. Retained: 42.91 %



T223A

TRU 223 - 55 Gr. SP

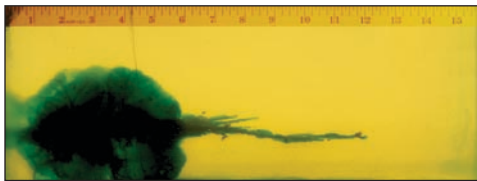


Bullet Weight: 55 Gr.
 Velocity: 2774 FPS
 Penetration: 11.50"
 Expansion: .4785"
 Retained Wt: 46.4
 Percent Wt. Retained: 84.36 %



T223F

TRU 223 - 55 Gr. Ballistic Tip

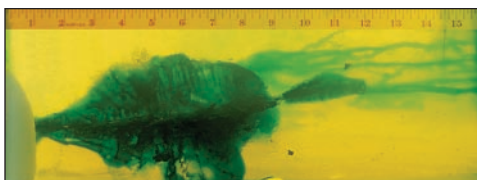


Bullet Weight: 55 Gr.
 Velocity: 2845 FPS
 Penetration: 12.00"
 Expansion: .223"
 Retained Wt: 10.3
 Percent Wt. Retained: 18.73 %



AE223

American Eagle 223 - 55 Gr. FMJ

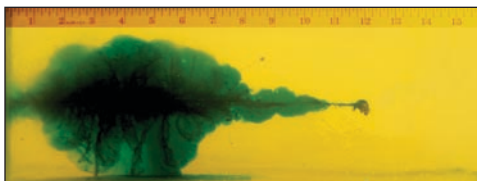


Bullet Weight: 55 Gr.
 Velocity: 2869 FPS
 Penetration: 12.25"
 Expansion: .2325"
 Retained Wt: 44.3
 Percent Wt. Retained: 80.55 %



T223L

TRU 223 - 64 Gr. SP

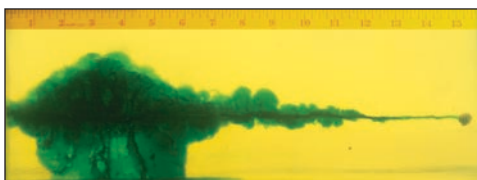


Bullet Weight: 64 Gr.
 Velocity: 2646 FPS
 Penetration: 12.25"
 Expansion: .5115"
 Retained Wt: 48.10
 Percent Wt. Retained: 75.16 %

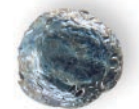


LE223T1

TACTICAL 223 - 55 Gr. BSP

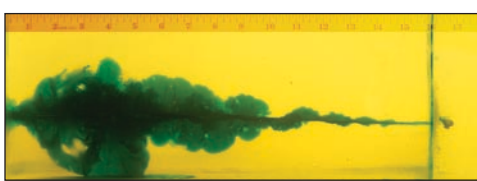


Bullet Weight: 55 Gr.
 Velocity: 2705 FPS
 Penetration: 15.50"
 Expansion: .461"
 Retained Wt: 55.0
 Percent Wt. Retained: 100.00 %



LE223T3

TACTICAL 223 - 62 Gr. BSP



Bullet Weight: 62 Gr.
 Velocity: 2716 FPS
 Penetration: 17.00"
 Expansion: .448"
 Retained Wt: 62.0
 Percent Wt. Retained: 100.00 %



Expansion, Retained Weight and Percentage Retained Weight are based on the largest available bullet fragment.

223 REM 5.56 NATO

Steel

FEDERAL

Firearm: Colt M4

Barrel: 14.5"

Twist Rate 1x7"

Range: 10 Yards

Caliber

Wound Characteristics

Stats

Recovered Bullet

T223D

TRU 223 - 40 Gr. HP



Bullet Weight: 40 Gr.
Velocity: 3270 FPS
Penetration: 6.25"
Expansion: .385"
Retained Wt: 14.4
Percent Wt. Retained: 36.00%

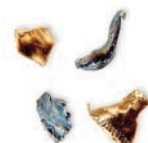


T223E

TRU 223 - 55 Gr. BTHP

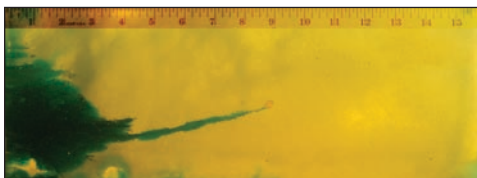


Bullet Weight: 55 Gr.
Velocity: 2815 FPS
Penetration: 9.00"
Expansion: .2585"
Retained Wt: 5.2
Percent Wt. Retained: 9.45%



T223F

TRU 223 - 55 Gr. Ballistic Tip

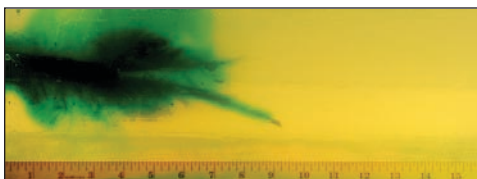


Bullet Weight: 55 Gr.
Velocity: 2845 FPS
Penetration: 9.00"
Expansion: .273"
Retained Wt: 11.0
Percent Wt. Retained: 20.00%



T223A

TRU 223 - 55 Gr. SP

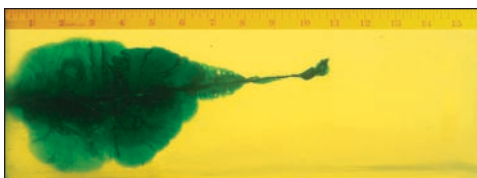


Bullet Weight: 55 Gr.
Velocity: 2774 FPS
Penetration: 9.50"
Expansion: .365"
Retained Wt: 25.9
Percent Wt. Retained: 47.09%



LE223T1

TACTICAL 223 - 55 Gr. BSP



Bullet Weight: 55 Gr.
Velocity: 2705 FPS
Penetration: 10.75"
Expansion: .4715"
Retained Wt: 44.1
Percent Wt. Retained: 80.18%

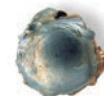


T223L

TRU 223 - 64 Gr. SP

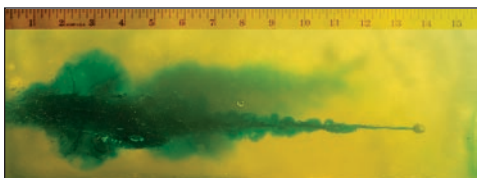


Bullet Weight: 64 Gr.
Velocity: 2646 FPS
Penetration: 11.25"
Expansion: .368"
Retained Wt: 27.2
Percent Wt. Retained: 42.50%



LE223T3

TACTICAL 223 - 62 Gr. BSP

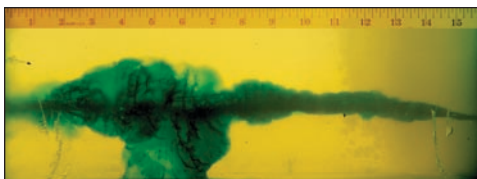


Bullet Weight: 62 Gr.
Velocity: 2716 FPS
Penetration: 14.25"
Expansion: .4365"
Retained Wt: 54.4
Percent Wt. Retained: 87.74%



AE223

American Eagle 223 - 55 Gr. FMJ



Bullet Weight: 55 Gr.
Velocity: 2869 FPS
Penetration: 16.00"
Expansion: .2335"
Retained Wt: 54.1
Percent Wt. Retained: 98.36%



Expansion, Retained Weight and Percentage Retained Weight are based on the largest available bullet fragment.

223 REM 5.56 NATO Wallboard

FEDERAL

Firearm: Colt M4

Barrel: 14.5"

Twist Rate 1x7"

Range: 10 Yards

Caliber

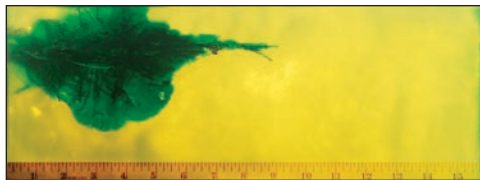
Wound Characteristics

Stats

Recovered Bullet

T223A

TRU 223 - 55 Gr. SP

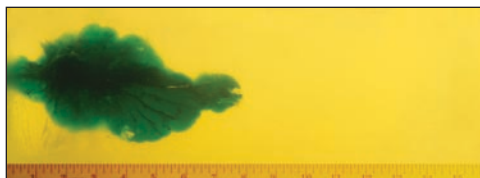


Bullet Weight: 55 Gr.
Velocity: 2774 FPS
Penetration: 7.25"
Expansion: .4685"
Retained Wt: 31.5
Percent Wt. Retained: 57.27%

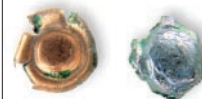


T223D

TRU 223 - 40 Gr. HP

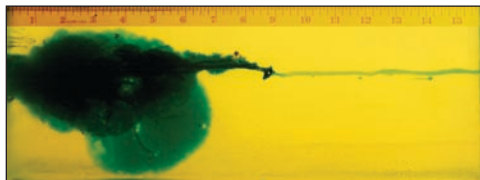


Bullet Weight: 40 Gr.
Velocity: 3270 FPS
Penetration: 7.25"
Expansion: .347"
Retained Wt: 4.7
Percent Wt. Retained: 11.75%



T223F

TRU 223 - 55 Gr. Ballistic Tip

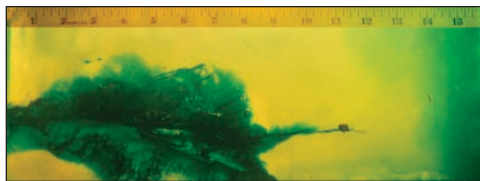


Bullet Weight: 55 Gr.
Velocity: 2845 FPS
Penetration: 8.5"
Expansion: .2605"
Retained Wt: 11.8
Percent Wt. Retained: 21.45%

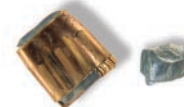


AE223

American Eagle 223 - 55 Gr. FMJ

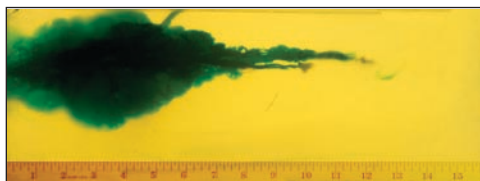


Bullet Weight: 55 Gr.
Velocity: 2869 FPS
Penetration: 11.25"
Expansion: .2155"
Retained Wt: 20.2
Percent Wt. Retained: 36.73%



T223L

TRU 223 - 64 Gr. SP

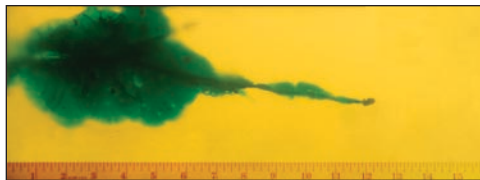


Bullet Weight: 64 Gr.
Velocity: 2646 FPS
Penetration: 12.25"
Expansion: .376"
Retained Wt: 20.0
Percent Wt. Retained: 31.25%



T223E

TRU 223 - 55 Gr. BTHP

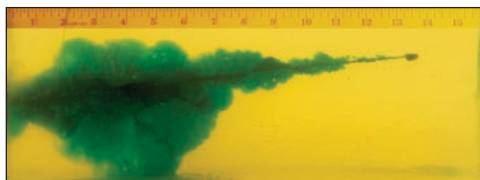


Bullet Weight: 55 Gr.
Velocity: 2815 FPS
Penetration: 12.5"
Expansion: .422"
Retained Wt: 21.0
Percent Wt. Retained: 38.18%

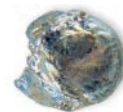


LE223T1

TACTICAL 223 - 55 Gr. BSP

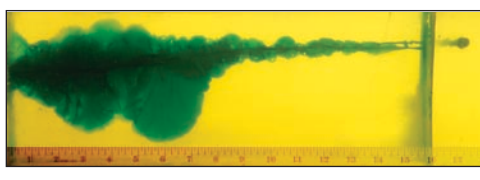


Bullet Weight: 55 Gr.
Velocity: 2705 FPS
Penetration: 14.00"
Expansion: .4645"
Retained Wt: 53.7
Percent Wt. Retained: 97.64%

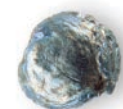


LE223T3

TACTICAL 223 - 62 Gr. BSP



Bullet Weight: 62 Gr.
Velocity: 2716 FPS
Penetration: 17.75"
Expansion: .4205"
Retained Wt: 62.0
Percent Wt. Retained: 100.00%



Expansion, Retained Weight and Percentage Retained Weight are based on the largest available bullet fragment.



223 REM 5.56 NATO

Plywood

Firearm: Colt M4

Barrel: 14.5"

Twist Rate 1x7"

Range: 10 Yards

FEDERAL

Caliber

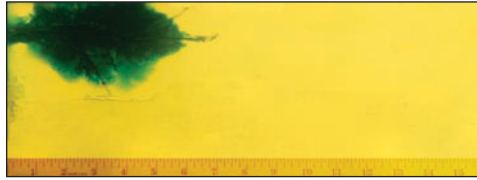
Wound Characteristics

Stats

Recovered Bullet

T223D

TRU 223 - 40 Gr. HP

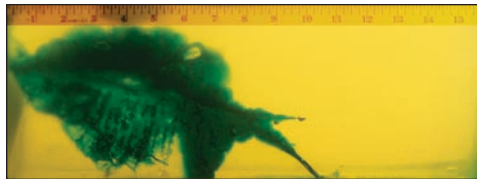


Bullet Weight: 40 Gr.
Velocity: 3270 FPS
Penetration: 6.50"
Expansion: .3685"
Retained Wt: 10.5
Percent Wt. Retained: 26.25%



AE223

American Eagle 223 - 55 Gr. FMJ



Bullet Weight: 55 Gr.
Velocity: 2869 FPS
Penetration: 10.00"
Expansion: .233"
Retained Wt: 45.3
Percent Wt. Retained: 82.36%



T223A

TRU 223 - 55 Gr. SP

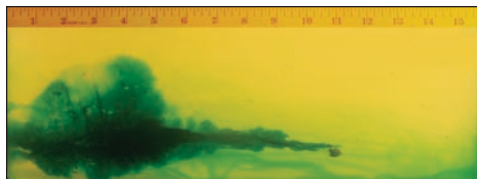


Bullet Weight: 55 Gr.
Velocity: 2774 FPS
Penetration: 10.50"
Expansion: .4305"
Retained Wt: 10.2
Percent Wt. Retained: 73.09%



T223E

TRU 223 - 55 Gr. BTHP

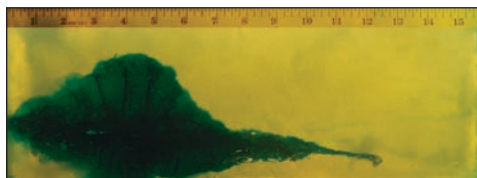


Bullet Weight: 55 Gr.
Velocity: 2815 FPS
Penetration: 11.25"
Expansion: .41"
Retained Wt: 30.9
Percent Wt. Retained: 56.18%



T223L

TRU 223 - 64 Gr. SP

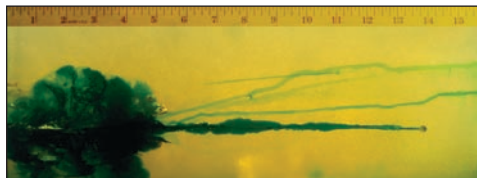


Bullet Weight: 64 Gr.
Velocity: 2646 FPS
Penetration: 12.25"
Expansion: .425"
Retained Wt: 45.9
Percent Wt. Retained: 71.72%



T223F

TRU 223 - 55 Gr. Ballistic Tip



Bullet Weight: 55 Gr.
Velocity: 2845 FPS
Penetration: 13.75"
Expansion: .223"
Retained Wt: 9.6
Percent Wt. Retained: 17.45%



LE223T1

TACTICAL 223 -55 Gr. BSP

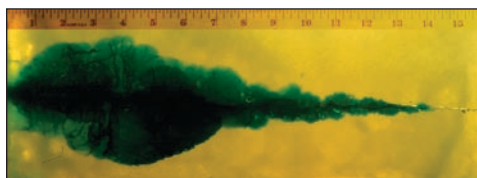


Bullet Weight: 55 Gr.
Velocity: 2705 FPS
Penetration: 15.00"
Expansion: .4585"
Retained Wt: 55.0
Percent Wt. Retained: 100.00%



LE223T3

TACTICAL 223 - 62 Gr. BSP



Bullet Weight: 62 Gr.
Velocity: 2716 FPS
Penetration: 17.50"
Expansion: .4295"
Retained Wt: 60.6
Percent Wt. Retained: 97.74%



Expansion, Retained Weight and Percentage Retained Weight are based on the largest available bullet fragment.

223 REM 5.56 NATO

Glass

FEDERAL

Firearm: Colt M4

Barrel: 14.5"

Twist Rate 1x7"

Range: 10 Yards

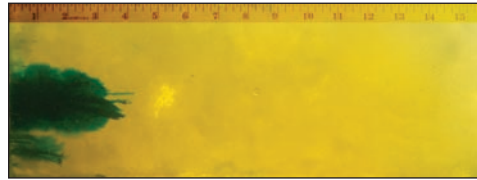
Caliber

Wound Characteristics

Stats

Recovered Bullet

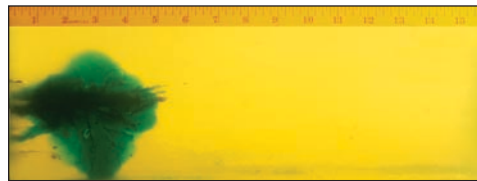
T223D
TRU 223 - 40 Gr. HP



Bullet Weight: 40 Gr.
Velocity: 3270 FPS
Penetration: 1.50"
Expansion: .0"
Retained Wt: 0.0
Percent Wt. Retained: 0.00 %



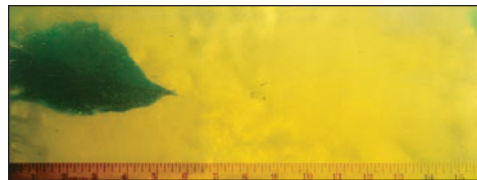
T223A
TRU 223 -55 Gr. SP



Bullet Weight: 55 Gr.
Velocity: 2774 FPS
Penetration: 2.25"
Expansion: .0"
Retained Wt: 0
Percent Wt. Retained: 0.00 %



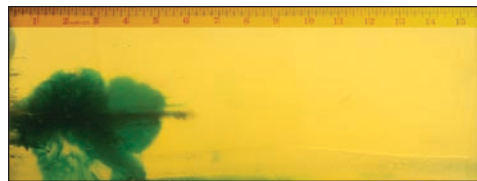
AE223
American Eagle 223 - 55 Gr. FMJ



Bullet Weight: 55 Gr.
Velocity: 2869 FPS
Penetration: 3.25"
Expansion: .359"
Retained Wt: 15.2
Percent Wt. Retained: 27.64 %



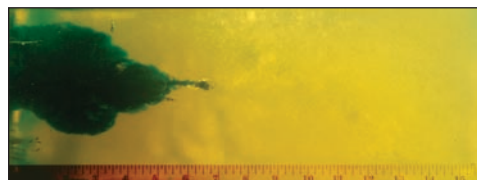
T223E
TRU 223 - 55 Gr. BTHP



Bullet Weight: 55 Gr.
Velocity: 2815 FPS
Penetration: 6.25"
Expansion: .4"
Retained Wt: 19.2
Percent Wt. Retained: 34.91 %



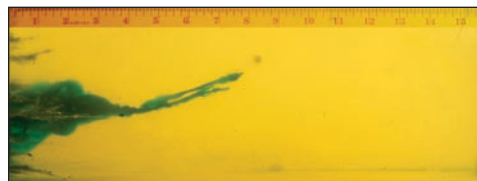
T223L
TRU 223 - 64 Gr. SP



Bullet Weight: 64 Gr.
Velocity: 2646 FPS
Penetration: 6.5"
Expansion: .406"
Retained Wt: 22.0
Percent Wt. Retained: 34.38 %



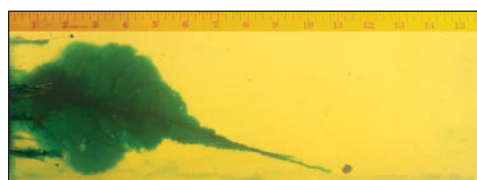
T223F
TRU 223 55 Gr. Ballistic Tip



Bullet Weight: 55 Gr.
Velocity: 2845 FPS
Penetration: 8.25"
Expansion: .223"
Retained Wt: 9.8
Percent Wt. Retained: 17.82 %



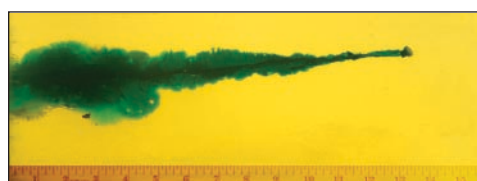
LE223T1
TACTICAL 223 - 55 Gr. BSP



Bullet Weight: 55 Gr.
Velocity: 2705 FPS
Penetration: 11.5"
Expansion: .3555"
Retained Wt: 27.6
Percent Wt. Retained: 50.18 %



LE223T3
TACTICAL 223 - 62 Gr. BSP



Bullet Weight: 62 Gr.
Velocity: 2716 FPS
Penetration: 13.50"
Expansion: .354"
Retained Wt: 33.7
Percent Wt. Retained: 54.35 %



Expansion, Retained Weight and Percentage Retained Weight are based on the largest available bullet fragment.